

A Microwave Multimeter

TSviewLite allows taking RF measures with just one click. Measuring results are presented by big analog and digital readouts.

The instruments are readable from long distances.

Optionally selectable reports are stored as ASCII „CSV“ files and may be opened by any spreadsheet program.

A K-TS1 testsystem controlled by TSviewLite may replace expensive RF test equipment.

Description

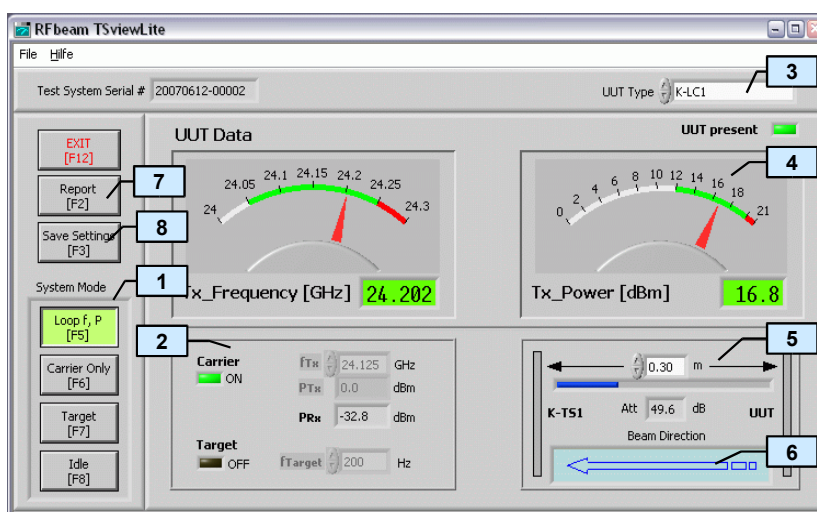
TSviewLite is an optional graphical user interface for the ultra compact RFbeam K-TS1 testsystem. It communicates with K-TS1 via a serial USB interface with a Microsoft Windows PC.

Users of Radar sensors now become able to establish teststands for production or reception inspections with minimal investments. TSviewLite is well suited for adjustment and tuning of radar based systems.

Typical Applications

- System Tuning and Adjustment
- Radar Transceiver Testsystems
- Final Inspection Systems
- Stand Alone Operation as Synthetic Target
- Education
- Radar Transceiver Development

The TSviewLite Screen



Legend of Controls

- (1) System mode selection
- (2) Operation indicators and controls
- (3) UUT type sets instrument limit indicators
- (4) Measured UUT transmit power respecting distance
- (5) Distance selector between K-TS1 and UUT for attenuation calculation
- (6) Shows principal beam direction
- (7) Store values into a report file
- (8) Save system mode permanently into K-TS1 EEPROM

TSviewLite showing a K-LC1 transceiver data